

Inenco Online

Your Integrated
Web-Based Reporting Tool



Introduction to Inenco Online

Whether you are looking at your price, consumption or carbon emissions, [the starting point for any form of energy management is data.](#)

Acquiring and manipulating the data you need to manage your energy supplies requires time, resources and expertise. If you already work with Inenco you will understand the value of outsourcing to the experts. Our new service is designed to [make this even easier.](#)

Inenco Online is our new integrated web-based reporting tool. As the successor to the widely used Streamline system, Inenco Online gives you access to all of your Inenco products and services [in one place, at the touch of a button.](#)

Inenco Online is available [24/7](#) and gives you direct access to a range of financial and consumption data. This can include your utility invoices, consumption data, carbon reports and more.

[“Many organisations manage their utility data using multiple databases and spreadsheets. Whilst this approach can be successful up to a point, soon they become unwieldy and time consuming. A centralised system provides a solid foundation for effective energy management.”](#)

[- Beth Mercer,](#)

[Inenco Online Product Development Manager](#)



Features of Inenco Online



Inenco Online redefines the standard for online energy reporting systems.

As well as offering [the best web-based energy reporting and analysis tools available](#), Inenco Online acts as a hub for all of your energy management requirements. This means that all of your energy data, reports and Inenco service documentation are easily accessible online from anywhere in the world.

- Access to a range of cost and consumption reporting tools [24 hours a day, 7 days a week](#)
- A high level view of [all documentation](#) - including budgets and accruals, carbon performance, trading statements and supplier invoices
- [Personalised sections](#) holding information on your account with us, including contracts, proposals and details of your dedicated team with the ability to contact them directly from the system
- [User friendly](#) navigation system
- [Fully supported Help Centre](#) with 'How to Guides' for all sections of the site
- Direct access to [reporting tools](#) including Tradepoint Online and AMR Streamline
- Option to output the data you need into a [spreadsheet or PDF document](#)

Data Management & Reporting

Most organisations, particularly those with multiple sites, receive a high volume of information relating to their energy usage. Inenco Online puts the power to [manage your energy expenditure](#) at your fingertips by storing all of your information centrally.

As a “front end” to our Bureau Service, Inenco Online gives you direct access to [all of your data](#), whether this is copy invoices, contracts, or reports.

Using our energy and carbon reporting tools, you can turn your raw data into a useful report at the push of a button. Reports can be exported either as a PDF or spreadsheet, allowing for [easy distribution](#) electronically or by paper.

You can also [directly access](#) any reports our analysts have produced for you as part of our Bureau Service, including up to date budgets, accruals, payment journals and CRC reports.

- ✓ Report energy consumption and costs to your organisation using automatically generated reports
- ✓ Support your [compliance with energy legislation](#) such as the CRC using our carbon reporting tools and our CRC performance reports



Budgets / Accruals / Payment Journals / Supplier Invoices



Weekly Market Reports / Supplier Contracts / TradePoint



Invoice Based Reporting / AMR Overview / AMR Reports



CRC Footprint Report / Annual Report

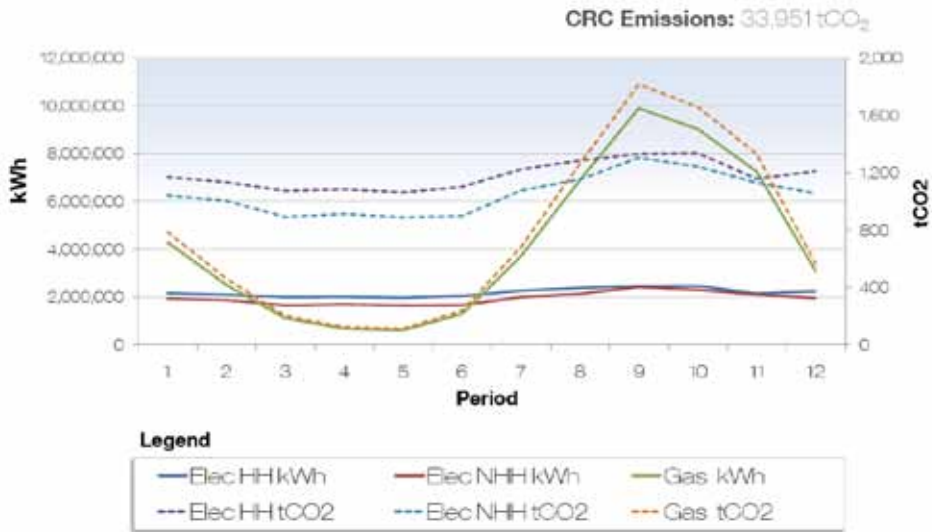


CCL / CRC Energy Efficiency Scheme / EPCs and DEC's

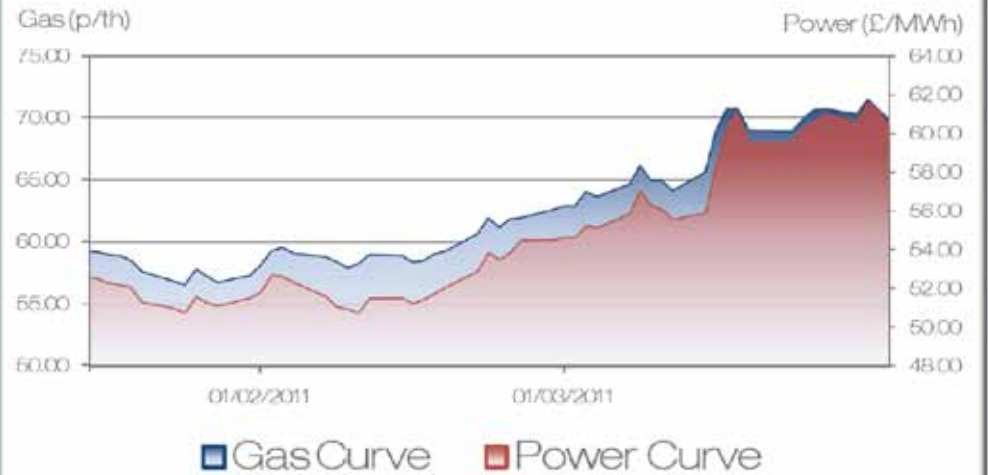
- ✓ Reduce your energy costs by tracking your expenditure and identifying high energy usage
- ✓ Make managing your data easier, quicker and [more efficient](#)

“The new website is great and will come in very handy for M&S”
 - Danielle Malone, Energy Reporting, Communications & CRC Manager,
 Marks & Spencer

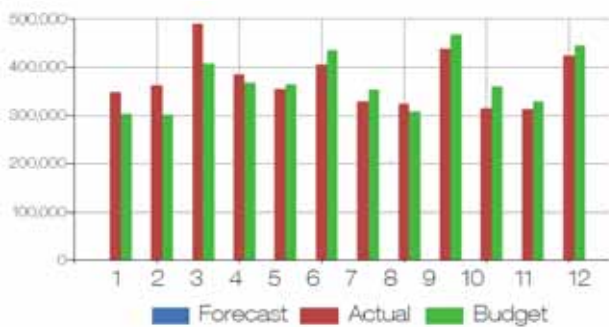
CRC Footprint Report



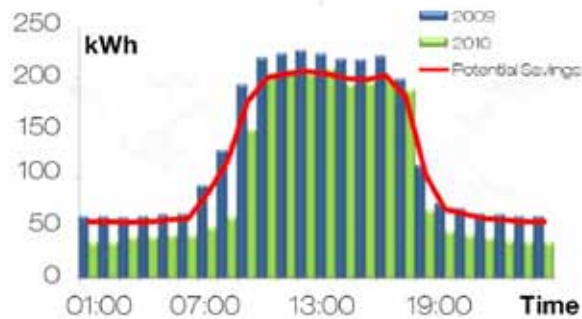
Weekly Market Reports



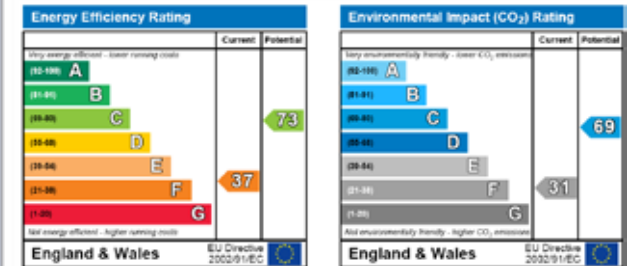
Budgets



AMR Reports



EPCs and DEC



Communication

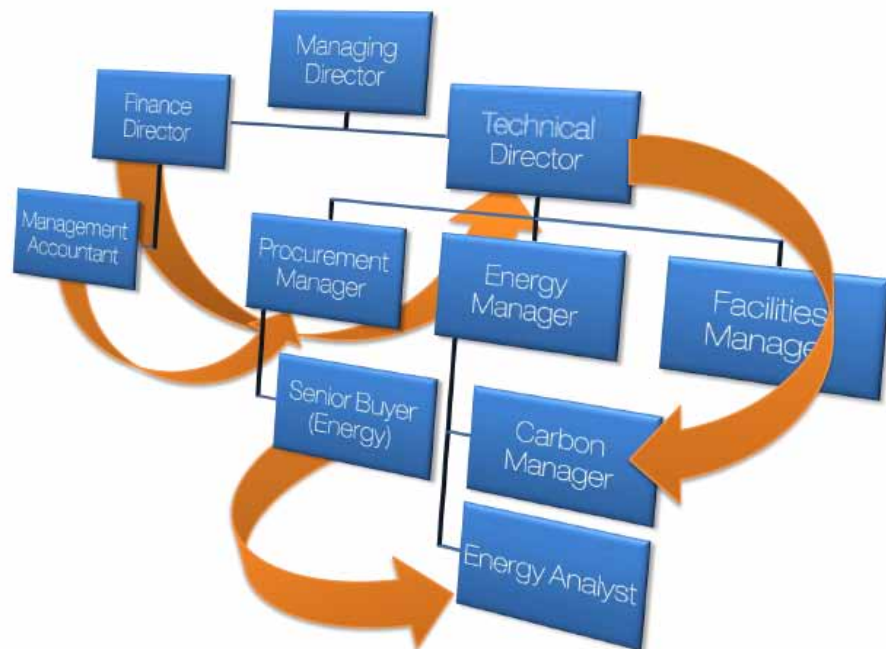
Your organisation may require staff from **multiple parts of your business** to access your energy data, for example:

- Energy Managers
- Finance and Accounts
- Procurement and Sourcing
- Facilities Management
- Site Managers
- Electrical Engineers
- Analysts

Inenco Online can accommodate **any number of users**, so that everybody who needs access can be set up to use the system.

Security permissions are controlled centrally and provide **varying levels of access**. This might mean for example that your Accounts team can use the system to view group financial data, whilst site managers can use it to track the consumption data for their own site.

- ✓ Improve communication across your organisation by **sharing invoicing data and documentation** with other users
- ✓ Enable multiple users at your organisation to benefit from Inenco Online **without compromising the security of your data**, using access permissions



“Fantastically useful system, I don’t know how I did without it - top marks!”

- Mark Jacobs, Energy & Facilities Engineer,
Talk Talk Technology

Accessibility



Anytime, anywhere, any platform... from the outset, Inenco Online has been designed to provide you with full 24/7 access to your important energy data, whether you are at work, working from home or even on the move.

The accessibility considerations don't stop there - unlike most online energy data systems, we have designed an interface founded on user friendly principles.

To ensure you never get stuck in the middle of a task, we have put together the Help Centre, a comprehensive help system which details how to use every single element of Inenco Online.

- ✓ Promptly access all of your important energy data, *wherever and whenever* you need it, with our user friendly navigation system
- ✓ Let us show you how to obtain the data you require using the Help Centre

Personalisation

Branch Ref	From Date	To Date	Total Units	Cost	Invoice ID	Tonne CO ₂
Durham	01/01/2011	31/01/2011	29,321	£2,052.47	A32BB21	17.25
Durham	01/02/2011	28/02/2011	31,233	£2,196.31	A32BB22	16.37
Durham	01/03/2011	31/03/2011	30,045	£2,103.15	A32BB23	17.68
London	01/01/2011	31/01/2011	100,102	£7,007.14	A36BB21	58.89
London	01/02/2011	28/02/2011	98,007	£6,890.49	A36BB22	57.66
London	01/03/2011	31/03/2011	100,543	£7,038.01	A36BB23	59.15
Crews	01/01/2011	31/01/2011	45,202	£904.04	D87BB21	26.59
Crews	01/02/2011	28/02/2011	38,650	£773.00	D87BB22	22.74
Crews	01/03/2011	31/03/2011	25,033	£500.66	D87BB23	14.73
Edinburgh	01/01/2011	31/01/2011	95,102	£6,657.14	A36BB21	53.00

Table options

Step 1 of 3 - Columns to display:

Please tick the boxes of the columns you wish to display in the table. Try to limit your selection to at most 8 columns or reading the table may be difficult.

- | | |
|---|---|
| <input type="checkbox"/> ID | <input type="checkbox"/> Customer key |
| <input type="checkbox"/> Site key | <input type="checkbox"/> Meter key |
| <input checked="" type="checkbox"/> Branch Ref. | <input type="checkbox"/> Utility |
| <input type="checkbox"/> Status | <input type="checkbox"/> Supplier |
| <input type="checkbox"/> Supplier Ref. | <input checked="" type="checkbox"/> From Date |
| <input checked="" type="checkbox"/> To Date | <input type="checkbox"/> Total Units |
| <input type="checkbox"/> SupplierInvoiceKey | <input type="checkbox"/> ParentSupplierInvoiceKey |
| <input type="checkbox"/> Multi Fuel? | <input type="checkbox"/> Nett |
| <input type="checkbox"/> VAT | <input type="checkbox"/> Balance Brought Forward |
| <input type="checkbox"/> Gross | <input type="checkbox"/> Image |
| <input type="checkbox"/> Invoice Id | <input checked="" type="checkbox"/> Tonne CO ₂ |
| <input type="checkbox"/> Carbon Cost | <input type="checkbox"/> Division |
| <input type="checkbox"/> Region | <input type="checkbox"/> Department |

Close x Next

We realise that no two users have the exact same requirements when it comes to accessing energy data online.

It is for this reason that we have included a wealth of personalisation options within Inenco Online. Highly flexible and powerful filters are available for every table within the system, which can hide unwanted records or unwanted columns.

This ensures that you can easily view the data that you want in the way that you want to.



- ✓ Find the information you require rapidly, without having to wade through irrelevant data, with our easy to use filtering system
- ✓ Customise your reports in line with your own requirements using table options
- ✓ Integrate Inenco Online with your internal systems by adding your brand colours and company logo

Service Delivery

Inenco Online comes with varying levels of service that you can select from depending on your requirements. Please note that regardless of the service you have contracted with Inenco, you will be able to access your project details using Inenco Online.

Level 1

At Service Level 1, Inenco Online provides access to "Your Inenco".

This section holds a range of information to help you navigate your Inenco services, including your team and all of their contact details, access to our Seminar presentations and your site and meter site lists.

- Your Inenco team
- Seminar presentations
- Site/Meter site lists
- Project details
- Meeting agendas and minutes
- Contracts and proposals

Level 2

At Service Level 2, Inenco Online is a standalone energy management tool.

In addition to Level 1 functionality you will have access to your contracted service areas and the standard reports included with these services.

- All of the features of Level 1
- Supplier invoices
- Consumption reporting
- Trading statements
- CRC footprint reports
- Budgets, Accruals and Payment journals

Level 3

At Service Level 3, you will benefit from a vast array of additional reporting features.

All of the features are available from Service Level 1 & 2, plus our bespoke reporting service, which provides reports tailored to your own specific requirements. You can discuss this with your account manager if you would like bespoke reporting added to your contract.

- All of the features of Level 1 and 2
- A suite of reports tailored to your own exact specifications



Managing Your Energy Data



Metering Data

- 120,000 lines of Half Hourly data
- 8,000 electricity meter reads
- 8,000 gas meter reads
- 3,500 water meter reads



Supplier Data

- 11,600 electricity invoices (EDI)
- 8,000 gas invoices (EDI)
- 3,500 water invoices (paper)
- 5 supply contracts



The Business

- 300 Half Hourly electricity sites
- 1,000 Non Half Hourly electricity sites
- 1,300 gas sites
- 1,100 water sites



Compliance

- 1 carbon footprint report
- 1 CRC report
- 125 Energy Performance Certificates

Case Study: Major Pub Company

Reporting

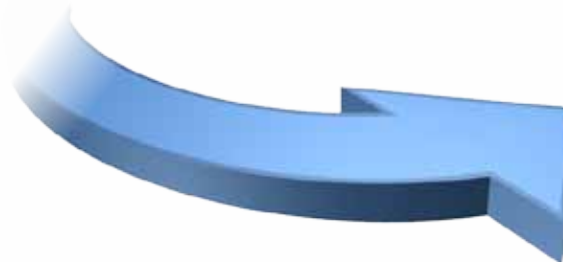
- 36 accruals reports
- 12 budget reports
- 12 consumption reports
- 12 payment journals
- 12 trading reports



Our client, a major pub chain, spends over **£30 million** every year on their electricity, gas and water expenditure across over 1,300 pubs.

The level of information within the business was getting difficult to manage. How can all this information be stored so that it can be located quickly and used effectively?

With staff across the business regularly requiring access to this data, our client was looking for a centralised **energy data management solution**.



Summary of Benefits



Communication

- ✓ Share cost, consumption and carbon data with others across your organisation
- ✓ Protect your data using centrally managed access restrictions



Data Management & Reporting

- ✓ Reduce energy costs by tracking your usage
- ✓ Easily report on energy consumption, carbon emissions and expenditure
- ✓ Track carbon emissions to support your CRC compliance



Personalisation

- ✓ Find the information you require rapidly, by filtering out irrelevant data
- ✓ Customise reports to your own requirements



Accessibility

- ✓ Access your data anytime, anywhere, on any platform



Contact Us

Inenco has been supporting customers across all aspects of energy management since 1968. NIFES Consulting Group (National Industrial Fuel Efficiency Service) has been supplying energy management solutions to industry, commerce and the public sector across 50 countries worldwide for the last six decades.

With over 300 people across the UK, we have the breadth of skills to work with any type of organisation. We have specialists in procurement, validation, engineering, reporting and renewable generation. This means that as your partner we can help you find the right solution for your organisation and form a single point of support and advice for all your energy needs.

Contact us to find out
more about how Inenco
can help your organisation:



Inenco Group

*Energy Consultant of the
Year 2010*

www.energyexcellenceawards.com



INVESTOR IN PEOPLE



01253 785000



enquiries@inenco.com



www.inenco.com

Document Version 1.3.

